

MONTHLY MEMBERSHIP PROGRESS REPORT

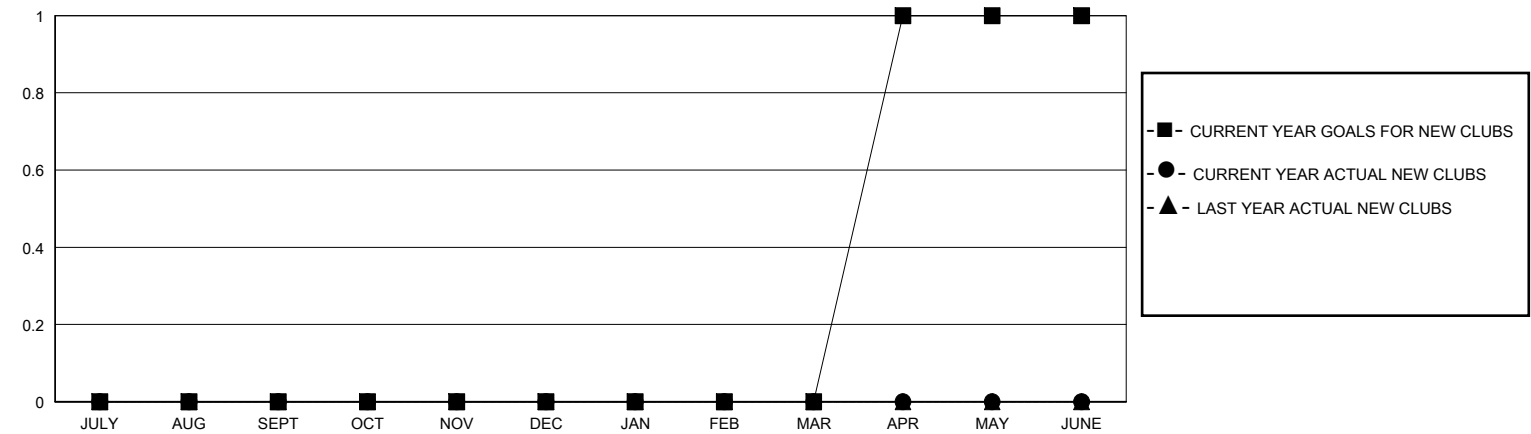
District 11 E1

Results as of: 6/30/2025

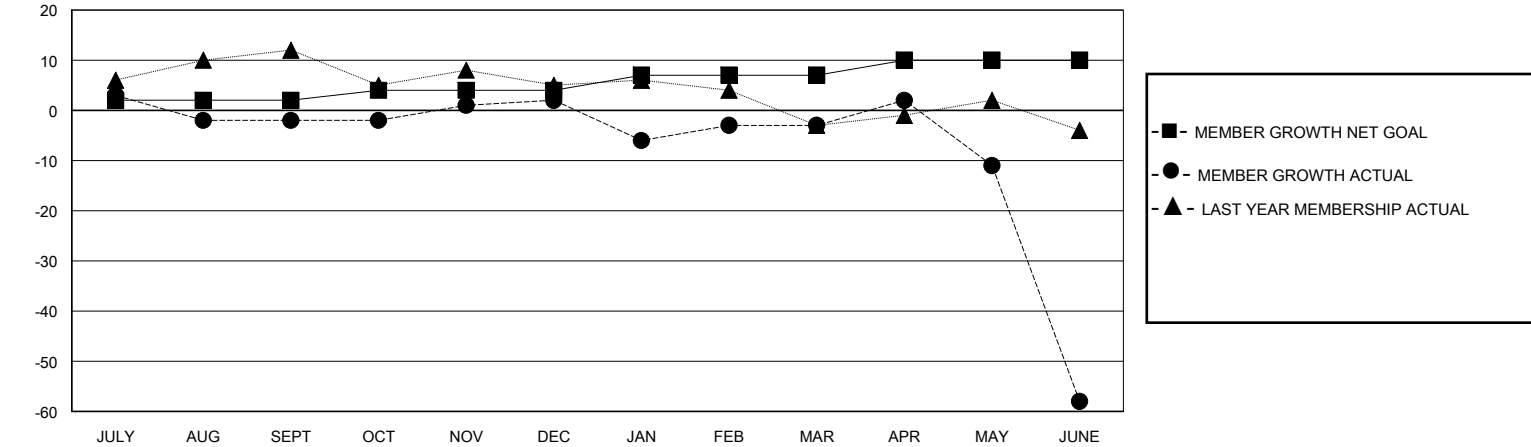
GMT: LOCATION MICHIGAN GMT CA			
Clubs			
RESULTS FOR 2024-2025			
QUARTER	NEW CLUB GOAL	NEW CLUBS	DROPPED CLUBS
JULY/AUG/SEPT	0	0	1
OCT/NOV/DEC	0	0	0
JAN/FEB/MAR	0	0	0
APR/MAY/JUNE	1	0	2

Members			
RESULTS FOR 2024-2025			
QUARTER	MEMBER GROWTH NET GOAL	MEMBER GROWTH ACTUAL	DROPPED MEMBERS ACTUAL (including transfers)
JULY/AUG/SEPT	2	25	26
OCT/NOV/DEC	2	22	17
JAN/FEB/MAR	3	18	22
APR/MAY/JUNE	3	26	75

GOALS AND ACTUAL NEW CLUBS CUMULATIVE



GOALS AND ACTUAL MEMBERS CUMULATIVE



DROPPED CLUBS: 3		26 CLUBS OF 38 ADDED 1 OR MORE NEW MEMBERS	<u>GENDER DISTRIBUTION</u>	
			MALE	534 (63.12%)
			FEMALE	312 (36.88%)
<u>DROPPED MEMBERS</u>		CLICK HERE FOR CUMULATIVE MEMBERSHIP DATA		
DECEASED	14		TOTAL FAMILY UNIT MEMBERS 220	
CLUB CANCELLED	1			
OTHER	124		FAMILY MEMBERS PAYING HALF DUES 112	
TOTAL	139			